



## DIY CRECHE

Contributed by Jamie Martin-Currie M.S.Ed.  
Illustrated by the Rev. Jay Sidebotham

### **Prayer**

*God, thank you for the gift of people for us to love and to love us. Help us to share what we have so that other people can grow to be healthy and thrive. Help us spread your love all over the world and to care for one another. Amen.*

### **Advent**

The four weeks before Christmas are a time to prepare our hearts and our lives as we wait for the coming of Jesus. We focus on the promise that God made to his people and how that promise was fulfilled in Jesus. We prepare for the coming of the Lord as we would prepare for the coming of a new member of our own family. How can we prepare for the birth of our Savior in a way that enables him to grow and thrive like all newborns?

### **Third Sunday in Advent**

Begin to set up the nativity scene or crèche. To emphasize that Advent is a time of waiting, add only one or two pieces every day to the stable until Christmas when you add the baby, Jesus.

### **Christmas Day**

On December 25 place all of the [Gifts that Nurture Children](#) in the stable for baby Jesus. These gifts are what all newborns to three-year old's need to reach their developmental milestones and grow to their full potential as children of God.

1. Nutrition
2. Music
3. Play with grownups
4. Listening
5. Playing with peers
6. Bond
7. Prayer
8. Language
9. Patience

### Christmas Season

The shortest season of the church year is Christmas. The season begins on Christmas day and ends on the Twelfth Night, January 6. We celebrate the birth of Jesus and our waiting time is over. In our Western culture, we have retained the customs of honoring this wonderful birth in many ways – from humble observances to the most extravagant – secular and holy.

One way to observe the Christmas season is to continue to keep your creche up for the twelve days of Christmas. After Jesus was born the Magi, also known as the Wise Men, begin traveling from far away to visit the newborn king. This Christmas the Magi are represented by twelve [Episcopal Relief & Development Ministry Partners](#) and individuals who are very wise people!

On December 26 place the Ministry Partners in other parts of your home and move them closer each day as they make their way toward Bethlehem. There are twelve so each day a different one arrives at the manger. Now you have a total of thirty pieces for your nativity scene, enjoy!

### How to Create Your Own ONE THOUSAND DAYS OF LOVE Creche

Many Christian families have a creche or nativity scene they set up when preparing their home for Christmas (some have more than one they have purchased or received as gifts). These are precious and often not suitable for play with children. This Advent, create an additional nativity scene as a family. Here are three examples of how to create with rocks, blocks, and/or sticks.

**Pro Tip: To reduce the size of the images, lower the % in the print settings to less than 100%.**



# WOODEN BLOCK CRECHE

## Materials needed:

Wooden blocks

White paper

Scissors

Mod Podge

Paintbrush

Wooden box (optional, yet a good place to store the blocks when not in use)

Print one copy of the [Holy Family, Gifts for Growth and Ministry Partners](#). Cut apart to fit on the blocks. Glue image on to blocks with Mod Podge and apply a second coat over image to seal. Rinse paintbrush in water.



# ROCK CRECHE

## Materials needed:

- Printed images on white paper
- Scissors
- Mod Podge
- Paintbrush
- Flat river rocks

Print one copy of the [Holy Family, Gifts for Growth and Ministry Partners](#). Cut apart. Cut images to fit onto the rocks. Either cut out the image or cut around the image so it fits best on your rocks. Apply Mod Podge with a paintbrush to rock and place the paper on the rock. Apply another coat of Mod Podge to seal. Rinse brush in water.



# STICK CRECHE

## Materials needed:

White paper

Craft sticks or leftover balsa wood sticks

Glue

Wooden box

Floral Foam

Print two copies of the [Holy Family, Gifts for Growth and Ministry Partners](#). Cut apart. Match the images together. Glue the craft stick between the two images. Insert foam into the box so stick images stand up.



# DIY MANGERS

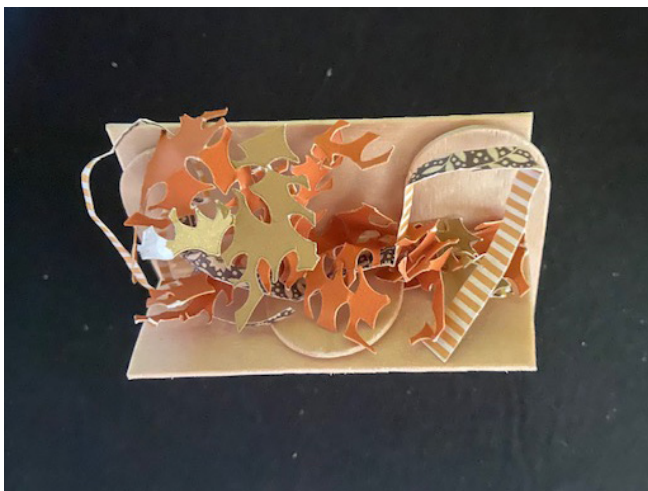
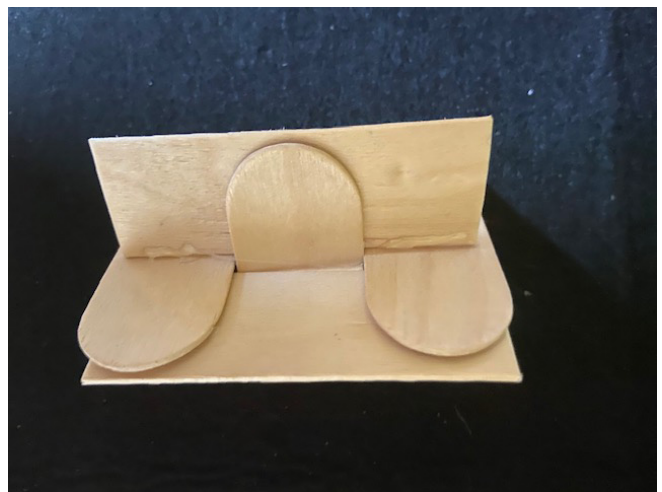
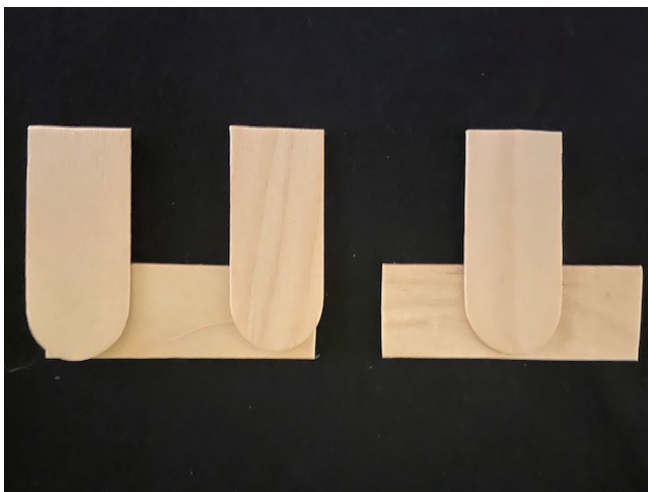
## Materials Needed:

Craft sticks or balsa wood

Hot glue gun

Hot glue sticks

Cut two or three sticks for each side and three legs. The important thing here is to glue on the legs so they don't bump into each other when you put the two sides together. You can glue on two legs toward the middle and two toward the outside. Slide together and hot glue in the center. Crumple up construction paper for the hay.



# HOLY FAMILY



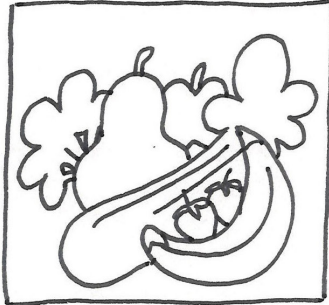
# HOLY FAMILY



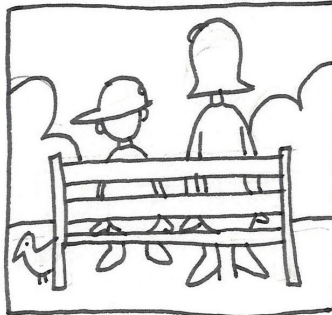


# HOME LOVE HUNT

NUTRITION



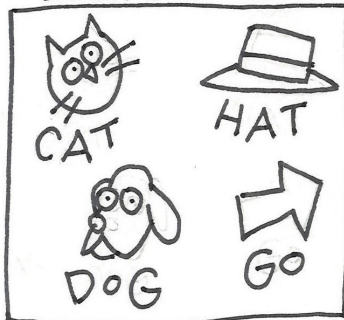
PATIENCE



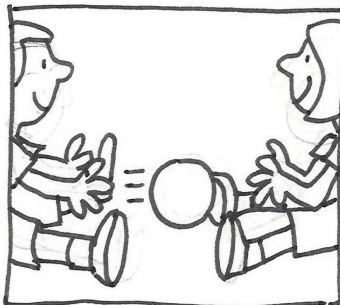
PLAY WITH GROWNUPS



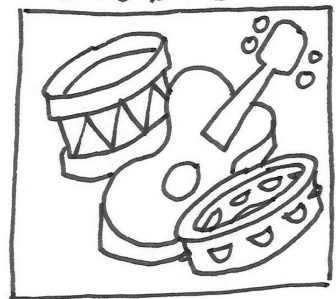
LANGUAGE



PLAYING WITH PEERS



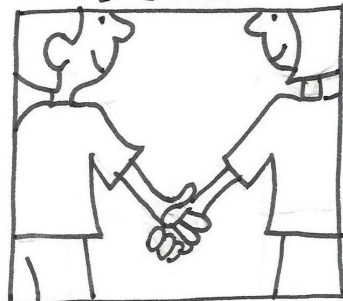
MUSIC



PRAYER



BOND



LISTENING



# HOME LOVE HUNT

NUTRITION



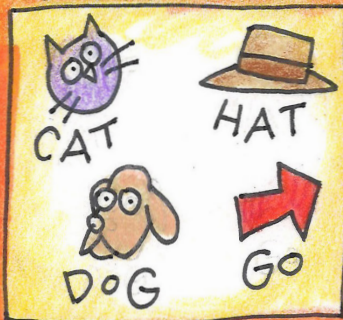
PATIENCE



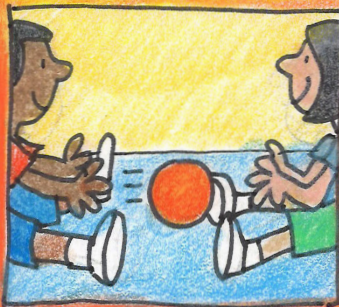
PLAY WITH GROWNUPS



LANGUAGE



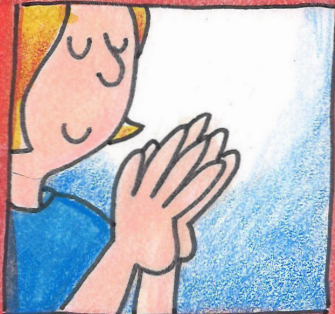
PLAYING WITH PEERS



MUSIC



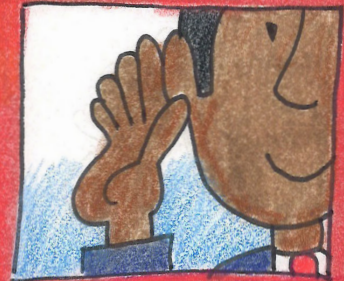
PRAYER



BOND



LISTENING



# MINISTRY PARTNERS

<p>PRIMARY CAREGIVERS</p> 	<p>SECONDARY CAREGIVERS</p> 	<p>EARLY CHILDHOOD DEVELOPMENT PROMOTERS</p> 	<p>FAITH LEADERS</p> 
<p>EARLY CHILDHOOD DEVELOPMENT COMMITTEE</p> 	<p>PARTNER FIELD OFFICERS</p> 	<p>NATIONAL LEADERSHIP</p> 	<p>DONORS</p> 
<p>EPISCOPAL RELIEF AND DEVELOPMENT STAFF</p> 	<p>CHURCHES</p> 	<p>EPISCOPAL RELIEF AND DEVELOPMENT VOLUNTEERS</p> 	<p>BISHOP CURRY</p> 

# MINISTRY PARTNERS

PRIMARY CAREGIVERS



SECONDARY CAREGIVERS



EARLY CHILDHOOD DEVELOPMENT PROMOTERS



FAITH LEADERS



EARLY CHILDHOOD DEVELOPMENT COMMITTEE



PARTNER FIELD OFFICERS



NATIONAL LEADERSHIP



DONORS



EPISCOPAL RELIEF AND DEVELOPMENT STAFF



CHURCHES



EPISCOPAL RELIEF AND DEVELOPMENT VOLUNTEERS



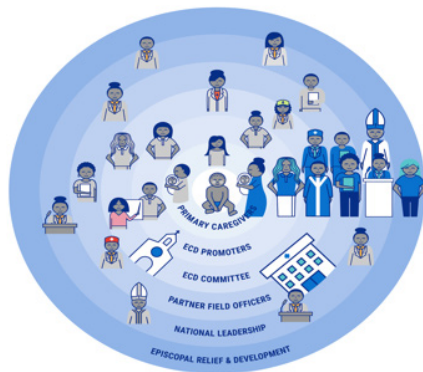
BISHOP CURRY



Ministry Partners make the **Moments That Matter** model possible. **Moments That Matter** (MTM) is an Integrated Early Childhood & Parenting Empowerment program based on the World Health Organization's "Nurturing Care Framework". The aim of MTM is to reach vulnerable newborns -three-year old's and their parents in rural Africa. The children targeted are affected by HIV, living in their rural households, and influenced by other vulnerabilities of poverty and lack of access.

The program focuses on strengthening children's cognitive, language, social, emotional and motor skills development through Responsive Care & Early Learning activities for Parents; then integrates health and nutrition activities, security and safety consideration, and family livelihoods – primarily through Savings with Education (savings and loan) groups - to round out the holistic approach to seeing children reach their full development potential.

The MTM model is delivered through 24-months of direct engagement with those closest to the child, creating rings of support and protection rippling out. Each level of participant and stakeholder has different roles and responsibilities.



**At the center is the child, surrounded by these twelve Ministry Partners:**

**Primary Caregivers** are usually the birth mothers, often grandparents, and sometimes siblings

**Secondary Caregivers** are fathers, aunts, uncles, and cousins

**Early Childhood Development Promoters** are trained volunteers who conduct visits & caregiver group meetings to promote good health

**Early Childhood Development Committees** manage the work of the promoters

**Partner Organizations** work directly with Episcopal Relief and Development who fund them to support the management at the Diocesan level

**National Leadership & Stakeholders** are worldwide church and government entities who support the program

**Donors** offer financial support

**Episcopal Relief & Development** gives technical support and much more

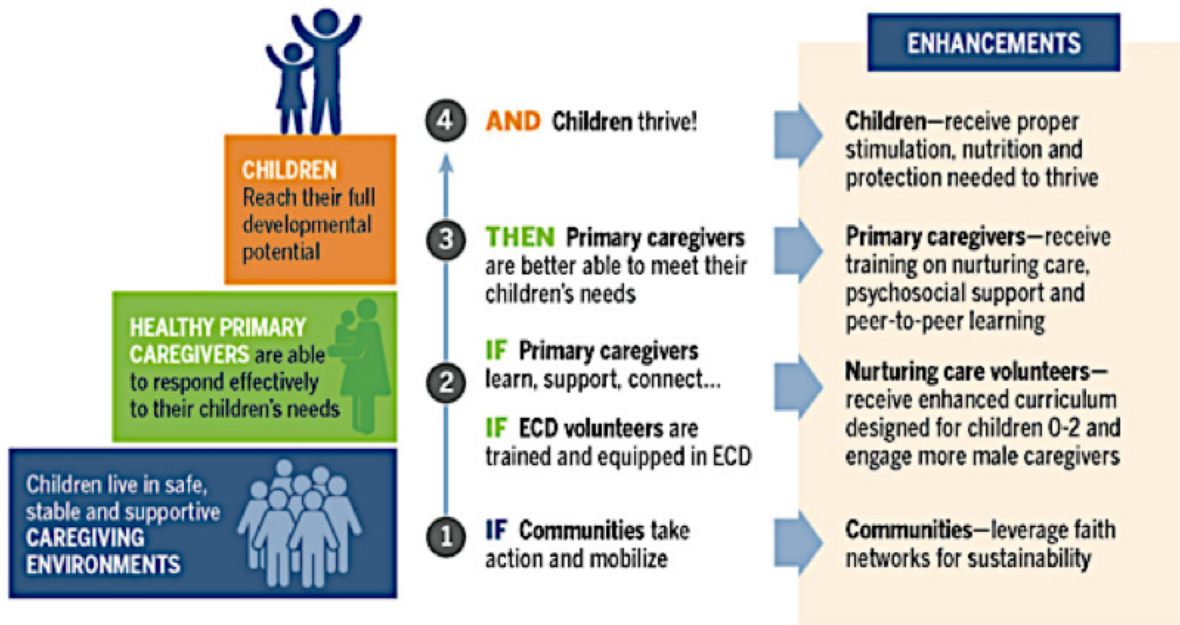
**Faith Leaders** share the campaign with congregations and pray for vulnerable children around the world

**Episcopal Relief & Development Volunteers** share their time and talent to make a difference

**Churches** launch campaigns to give parishioners the opportunity to help heal our hurting world

**The Right Reverend Bishop Michael Curry** knows if we save the children, we save the world

## Moments That Matter: Theory of Change



The MTM Theory of Change posits that creating enabling and supportive environments through mobilizing communities and faith leaders, training and equipping teams of frontline workers (which we call 'ECD Promoters' which is short for Early Childhood Development Promoters), and providing for the caregivers' own needs for support and information, that children will thrive.